



1200

McGill College



PRESENTED BY

BUSAC
REAL ESTATE

THE BUILDING

Prestigious address in the heart of the Business District, 1200 McGill College offers 12,650 SF of column-free office floor space where natural light and breathtaking views abound.

1200 McGill College with its distinctive presence stands out on the Montreal landscape. Choice location at the crossroads of major roadways, a five-minute walk from McGill Subway Station at the heart of the Montreal Underground Network, the Central Rail Station, and adjacent to the McGill Intermodal REM Station (Réseau express métropolitain) slated for a progressive opening in 2024. The Business District also offers an unparalleled shopping, dining and entertainment experience in downtown Montreal.

As a key player in urban dynamics, BUSAC Real Estate makes every effort to optimize its customer commitment through an onsite management team, sustainable practices and advanced technologies.



Flexibility // Luminosity // Comfort



LOCATION AND ACCESSIBILITY

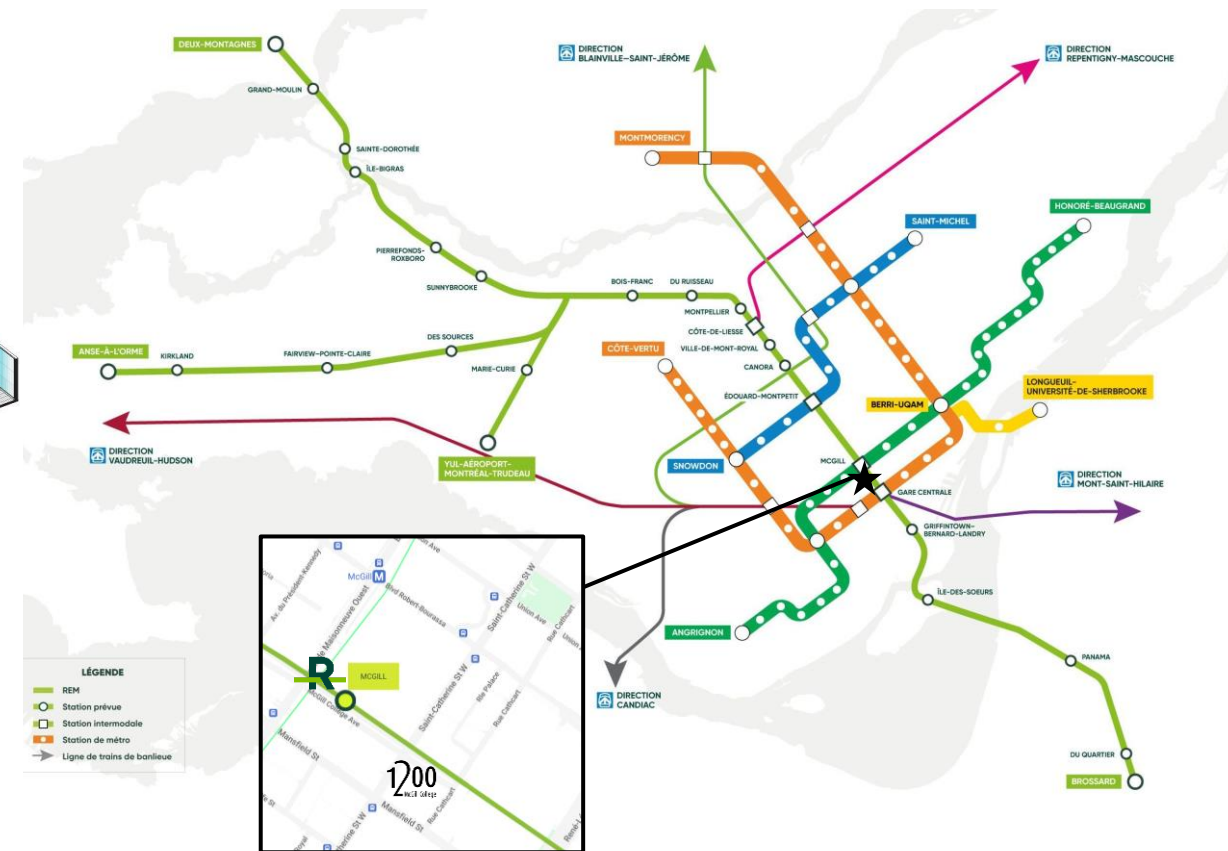
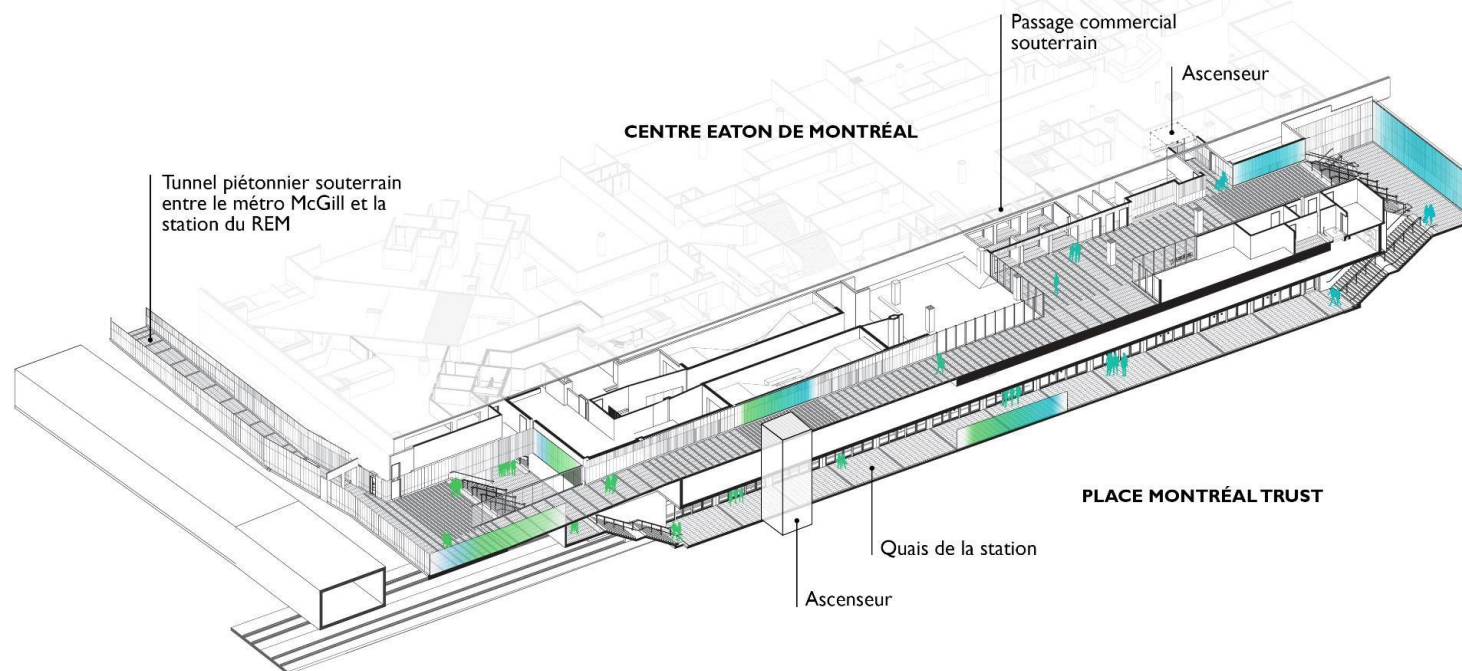
Réseau express métropolitain, future McGill Station

1200 McGill College is located at the crossroads of major highways, a five-minute walk from the McGill metro station, in the very heart of Montreal's underground pedestrian network, Central Station, and adjacent to the McGill Intermodal REM Station for the coming Réseau express métropolitain network slated for a progressive opening in 2024.*

Updated Schedule - Impact of COVID-19



-  STATION SOUTERRAINE MCGILL
-  ACCÈS PIÉTONNIER (NIVEAU PASSAGE COMMERCIAL)



PLACE DE L'AVENUE MCGILL COLLEGE

The downtown area around McGill College is abuzz with excitement with the redesign of Sainte-Catherine Street West, the arrival of the Réseau express métropolitain (REM) light rail network, as well as major private investments, notably the revitalization of Place Ville-Marie and its esplanade and the renovation of the Eaton Centre.



Place de l'Avenue McGill College



Time Out Market at the Eaton Centre

A hotspot for foodies and culture lovers alike, bringing the city's top restaurants, bars and cultural experiences under one roof.



Emblematic Ring

A grand art installation to revamp Montreal's downtown core.

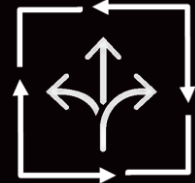


1200
McGill College

BUILDING FEATURES



Wide range of first-class amenities



Flexible floor plates



Large windows providing abundant natural light



Commanding views of the Saint-Lawrence River and majestic Mount Royal



Building proudly certified BOMA BEST Silver



Indoor parking facility reserved primarily for office tower occupants



Large bicycle parking facility



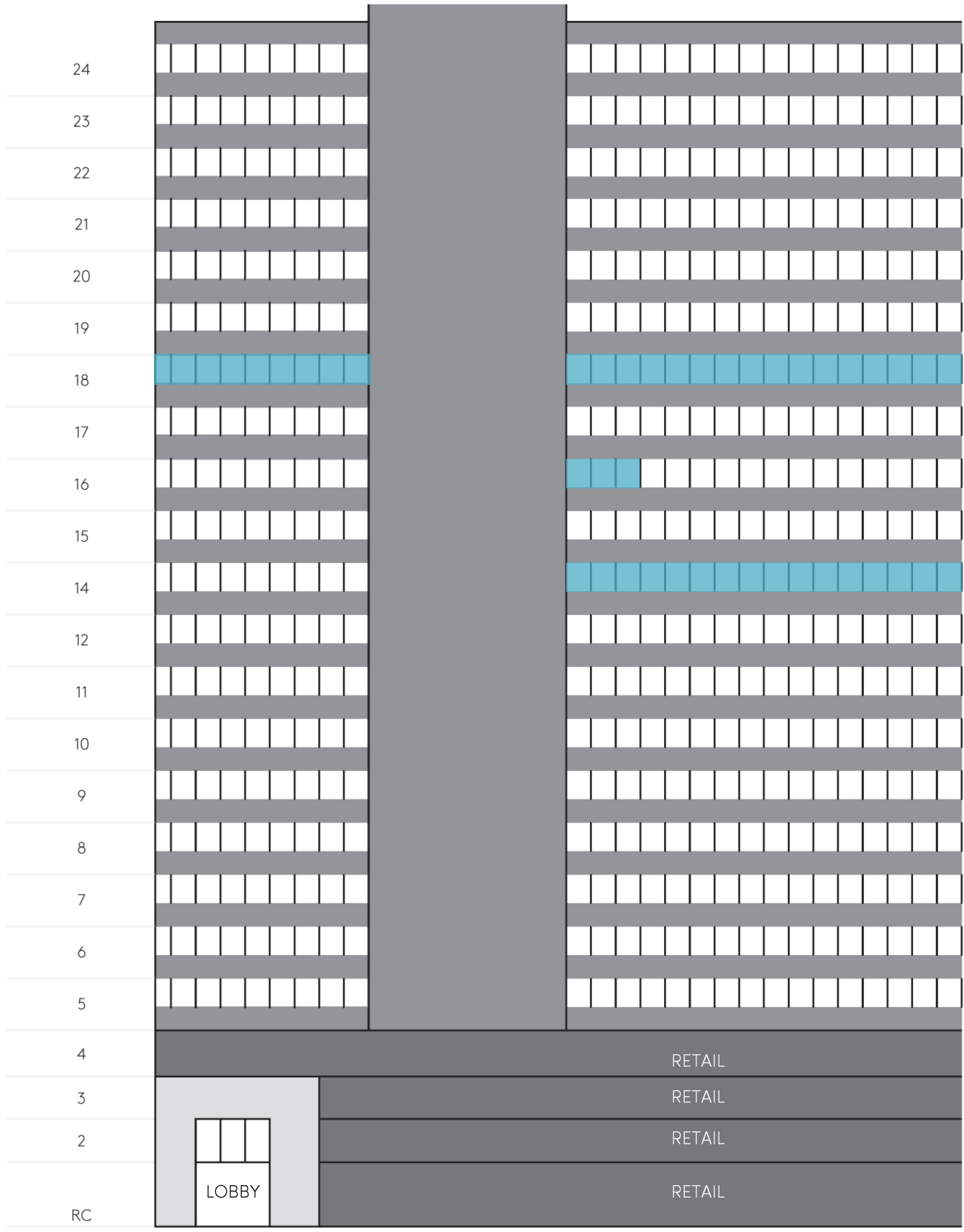
On site management



WE TAKE THINGS IN HAND

BUSAC Real Estate systematically optimizes its operational practices to best safeguard the health of occupants while ensuring their safety and wellbeing today and into the future.





MAIN ENTRANCE ON MCGILL COLLEGE AVENUE

VIEW FROM SAINTE-CATHERINE STREET

Availabilities

5,256 SF on the **14th** floor



Availability – Immediate

1,140 SF on the **16th** floor

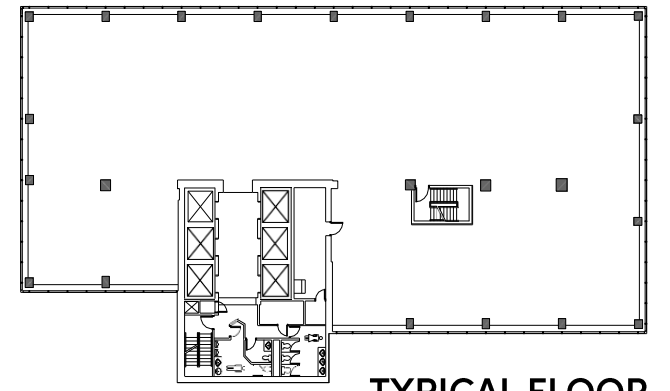


Availability - Immediate

12,656 SF on the **18th** floor



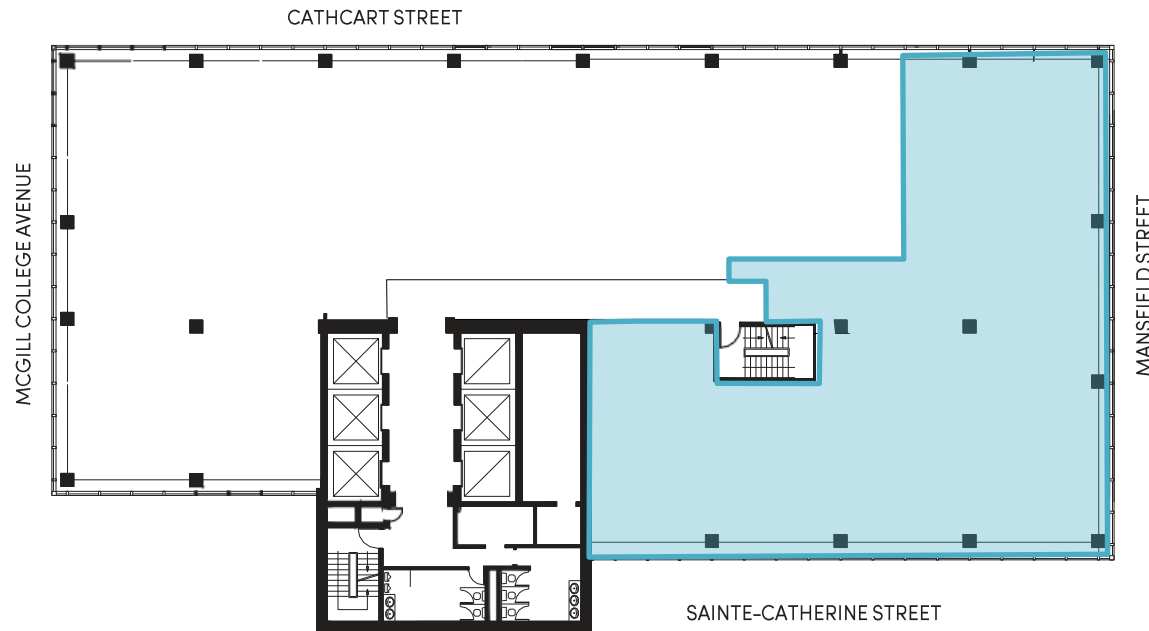
Availability - Immediate



TYPICAL FLOOR
12,650 SF

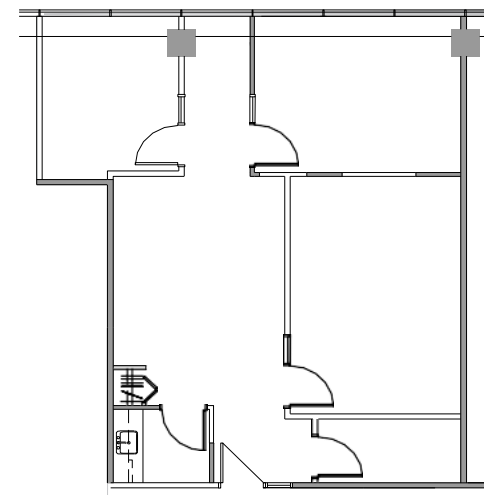
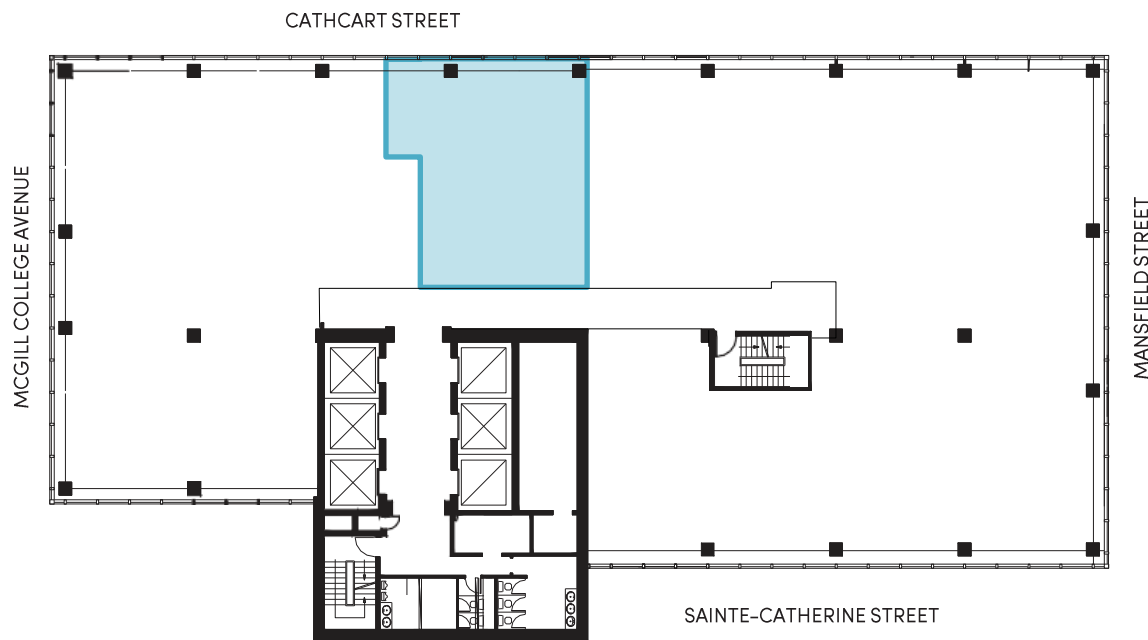
14TH FLOOR – 5,256 SF

AVAILABILITY – IMMEDIATE



16TH FLOOR – 1,140 SF

AVAILABILITY - IMMEDIATE



EXISTING CONDITIONS



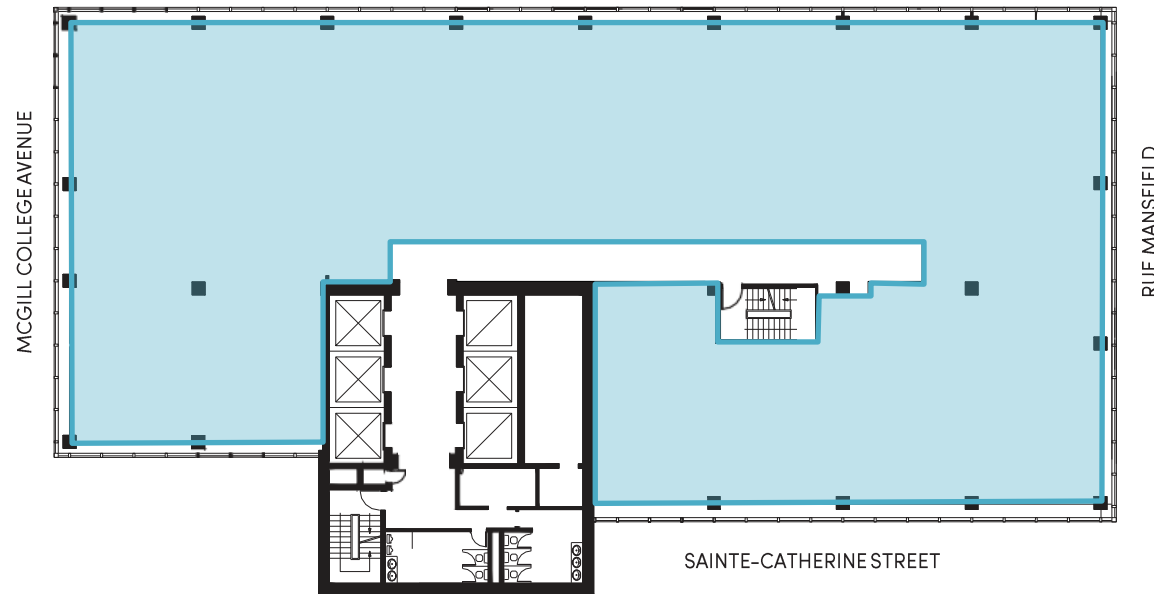
ALL CONDITIONS ARE APPROXIMATE



18th FLOOR – 12,656 SF

AVAILABILITY - IMMEDIATE

CATHCART STREET



SAINTE-CATHERINE STREET





1200
McGill College

For more information, please
contact:

Isabella Longoni
Leasing Representative
514 284-0014
i.longoni@busac.com

BUSAC
REAL ESTATE

BUSAC.COM